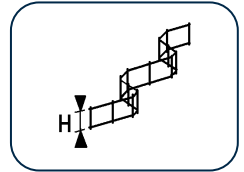


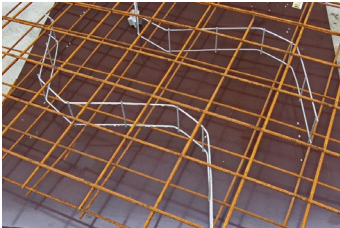
## ZIG ZAG HYCHAIR

### Continuous hychair

REF 03.01.02 - Version V02 - 01/09/2016



### Description



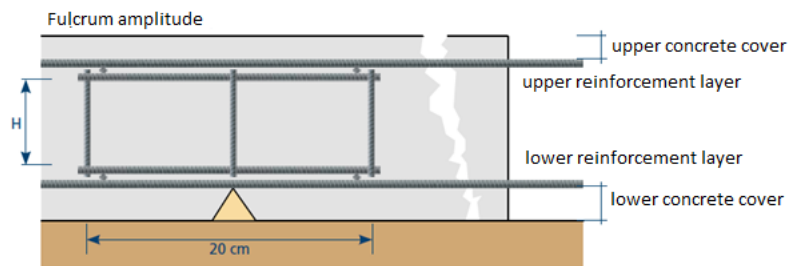
The Zig Zag hychair is a spacer to be installed between two reinforcement layers, to guarantee a defined distance between them.

### Application fields

Between two reinforcement layers into reinforced concrete floor slabs and walls.

### Characteristics

Material	
Quality of steel	B500B
Width of the zig zag hychair	20 cm*



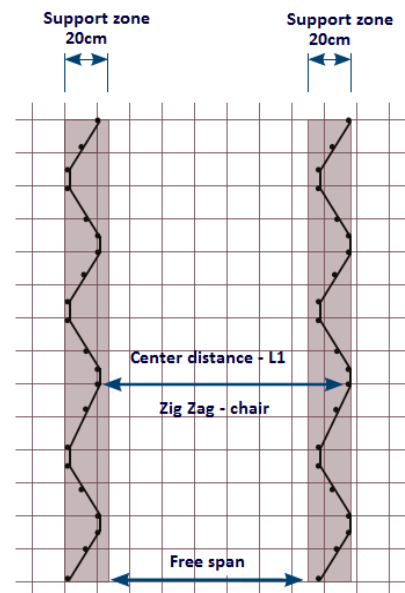
\*Due to the width of 20cm and at a height of max.20 cm, the Zig Zag hychairs do not need to be bound to the reinforcement layers.

### Recommended distance between the spacers

Reinforcement diameter	Distance between the spacers	Required length/m <sup>2</sup>
< 6.0 mm	500 mm	2.00 ml/m <sup>2</sup>
6.5 mm tot 12 mm	700 mm	1.50 ml/m <sup>2</sup>
> 12 mm	700 mm	1.50 ml/m <sup>2</sup>

### Maximum deflection

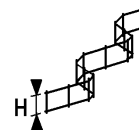
Load	Deflection		
	< 120 mm	120 < h < 200 mm	220 < h < 400 mm
4 kN	< 5 mm	6 mm	
6 kN			6 mm



### ZIG ZAG HYCHAIR

#### Continuous hychair

REF 03.01.02 - Version V02 - 01/09/2016



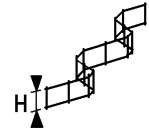
### Dimensions

Dimensions					
Code	Height h [cm]	m/Pal	Kg/ palt	m/Box	Kg/m
FRZZ02	2	7200	804	50	0.20
FRZZ03	3	7200	1400	50	0.21
FRZZ04	4	7200	1443	50	0.22
FRZZ05	5	4800	1008	50	0.22
FRZZ06	6	4800	1036	50	0.23
FRZZ07	7	4800	1065	50	0.24
FRZZ08	8	4000	920	50	0.25
FRZZ09	9	4000	944	50	0.25
FRZZ10	10	4000	968	50	0.26
FRZZ11	11	3200	804	50	0.27
FRZZ12	12	3200	823	50	0.28
FRZZ13	13	3200	877	50	0.31
FRZZ14	14	2400	686	50	0.32
FRZZ15	15	2400	703	50	0.33
FRZZ16	16	2400	718	50	0.34
FRZZ18	18	2400	847	50	0.41
FRZZ20	20	1600	609	50	0.43
FRZZ22	22	1600	760	50	0.45
FRZZ24	24	1600	788	50	0.49
FRZZ26	26	1200	702	50	0.58
FRZZ28	28	900	559	50	0.62
FRZZ30	30	900	579	50	0.64
FRZZ32	32	600	416	50	0.69
FRZZ34	34	600	451	50	0.75
FRZZ36	36	600	466	50	0.78
FRZZ38	38	600	481	50	0.80
FRZZ40	40	600	496	50	0.83

### ZIG ZAG HYCHAIR

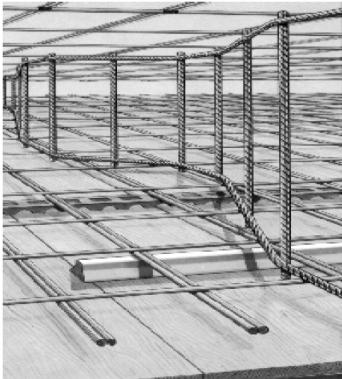
#### Continuous hychair

REF 03.01.02 - Version V02 - 01/09/2016

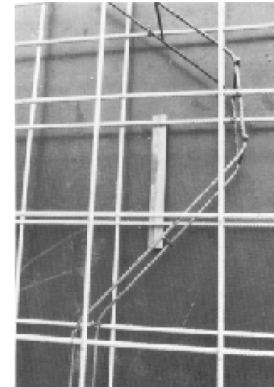


### Installation instructions

#### Use in a floor slab:



#### Use in a wall:



- Place the bottom reinforcement layer on top of the adapted spacers
- Install the zig-zag hychairs between the two horizontal reinforcement layers
- Place the upper reinforcement layer above the zig zag chairs and bind them together

- Place the zig zag hychair between the two vertical reinforcement layers and bind them together
- The reinforcement layers will remain at the right distance of the formwork by mean of adapted spacers

### Defining the height of the zig zag hychairs

$$h = d - a_1 - a_2 - b_1 - b_2$$

h: height of the zig zag chair

d : thickness floor slab

a1: thickness lower concrete cover

a2: thickness upper concrete cover

b1: thickness lower reinforcement layer (= 2  $\Phi$  reinforcement bar )

b2: thickness upper reinforcement layer (= 2  $\Phi$  reinforcement bar )

