

**PLAKA - SWELSTOP**

**Water swellable soft sealing**

REF 04.01.15 - Version V01 - 12/08/2020



Manufacturer's prescriptions

**Description**



Soft water swellable sealing:  
100% watertight

Hard core: pressure resistant  
up to 6 bar

SWELSTOP consists of an impact proof and pressure resistant core and a water swellable soft sealing. SWELSTOP guarantees a pressure resistant and waterproof sealing of hollow spacers made of PVC, fibre cement or steel.

**Application fields**

SWELSTOP is meant for pressure resistant and watertight sealing of hollow formwork spacers. SWELSTOP is easy to install in one single movement (installation time = 1 second). No finishing or after-treatment is required.

**Properties**

Mechanical properties	
Property	Value
Material	Hard core = impact proof polyamide (PA) Soft sealing = hydrophilic water swellable polymer Resistant to contact with a wide range of chemicals. Contact our technical department in case of doubt
Swelling capacity in concrete water	> 400 %
Swelling capacity in water	> 500 %
Swelling capacity in salt water	Approx. 150 %
Resistance to water pressure	Max 6 bar
Color	Hard core = color of concrete (grey) Soft sealing = blue

©Copyright protected

This sheet, written with great care, supersedes all previous versions. The technical information on the design, models, illustrations, design values and specifications are believed to be accurate. We make no warranties (expressed or implied) as to its accuracy and assumes no liability in connection with non suitable use of this product. We reserve the right to modify the contents of this form without prior notice.

**PLAKA - SWELSTOP**

Water swellable soft sealing

REF 04.01.15 - Version V01 - 12/08/2020

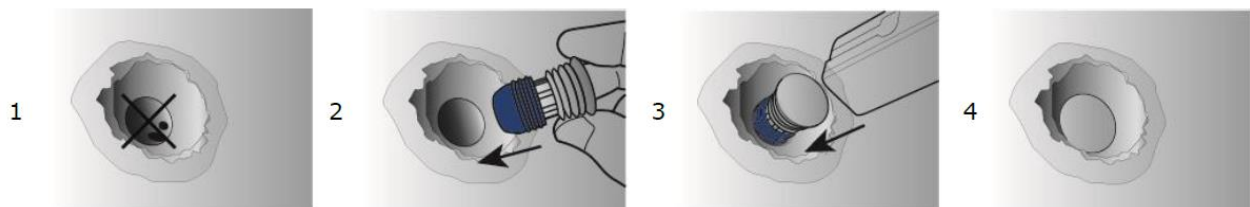


**Dimensions**



Diameter	adapted for holes diameter (mm) :	Ref. code	units/bag	units/box	units/palet
22 mm	21.50 - 22.20	DNBS22	100	1000	18 000
26 mm	25.50 - 26.20	DNBS26	100	500	9 000
32 mm	31.50 - 32.20	DNBS32	100	500	9 000

**Installation**



1. Remove the plastic conical end and remaining concrete parts from the spacer hole (brush).
2. Install SWELSTOP manually in the spacer sleeve.
3. Hit SWELSTOP in the spacer by use of a hammer until SWELSTOP is installed into the spacer sleeve
4. No finishing or after-treatment required

**Test report**

The product has been tested according to the report no 5261/998/14/MPA-BS.

This test report is available on simple request.

©Copyright protected

This sheet, written with great care, supersedes all previous versions. The technical information on the design, models, illustrations, design values and specifications are believed to be accurate. We make no warranties (expressed or implied) as to its accuracy and assumes no liability in connection with non suitable use of this product. We reserve the right to modify the contents of this form without prior notice.